

$\frac{1}{2}$ of the square is colored.

$\frac{1}{2}$ is 1 out of the 2 equal parts.



$\frac{1}{4}$ of the square is colored.

$\frac{1}{4}$ is 1 out of the 4 equal parts.



(a) Which pictures show $\frac{1}{2}$?



A



B



C

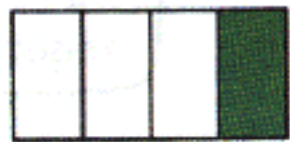


D

(b) Which pictures show $\frac{1}{4}$?



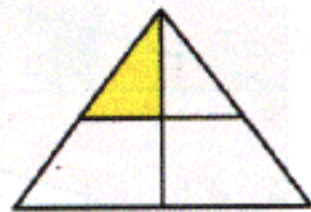
P



Q



R



S

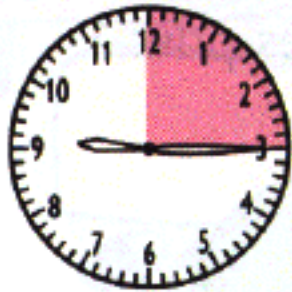
(a) How many halves are there in a whole?

(b) How many quarters are there in a whole?

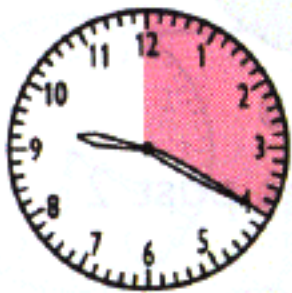


It is 9 o'clock.
9:00

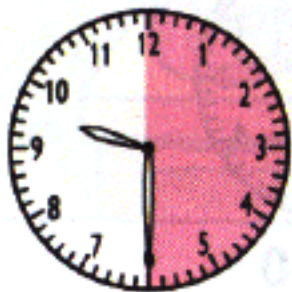
We read 9:15 as **nine fifteen**.
It is 15 minutes after 9 o'clock.



It is 15 minutes past 9.
9:15



It is 20 minutes past 9.
9:20

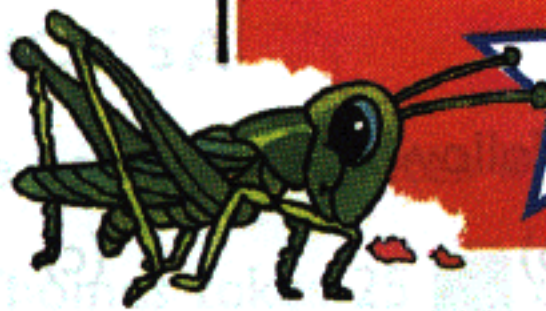


It is 30 minutes past 9.
9:30



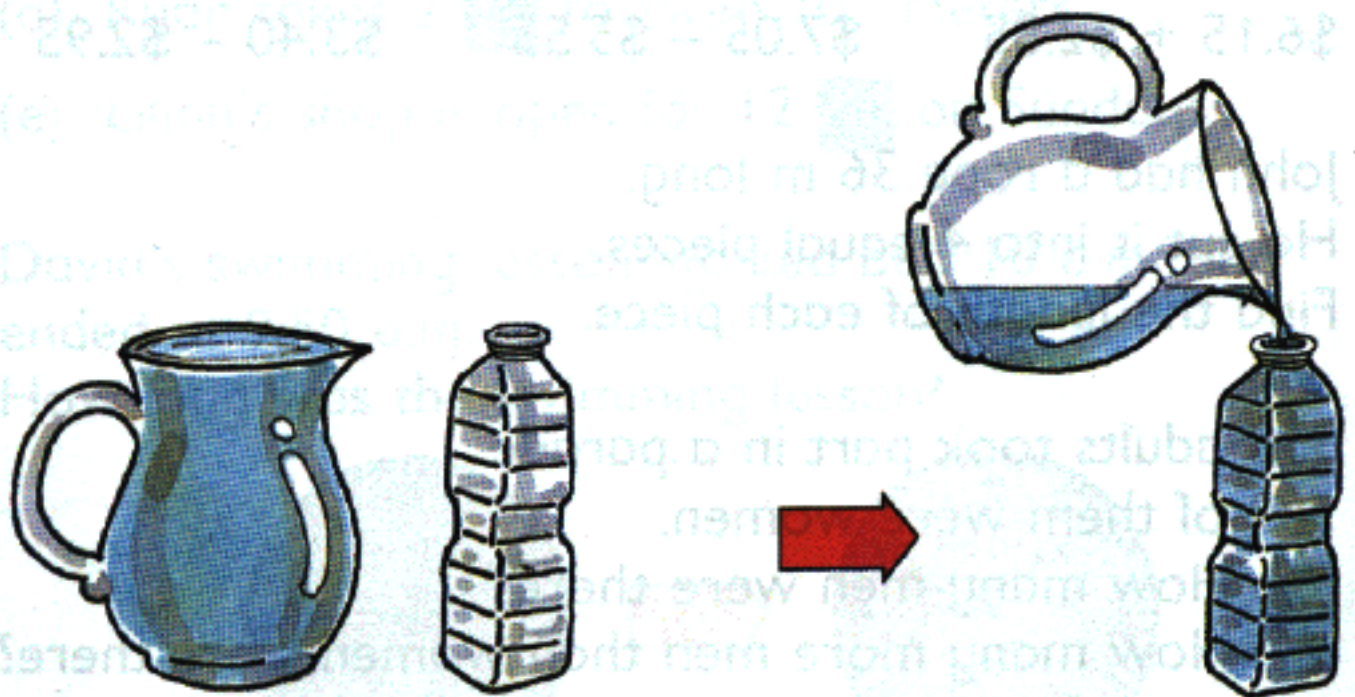
It is 15 minutes to 10.
9:45

9:45 is **45** minutes after 9 o'clock.
9:45 is **15** minutes before 10 o'clock.

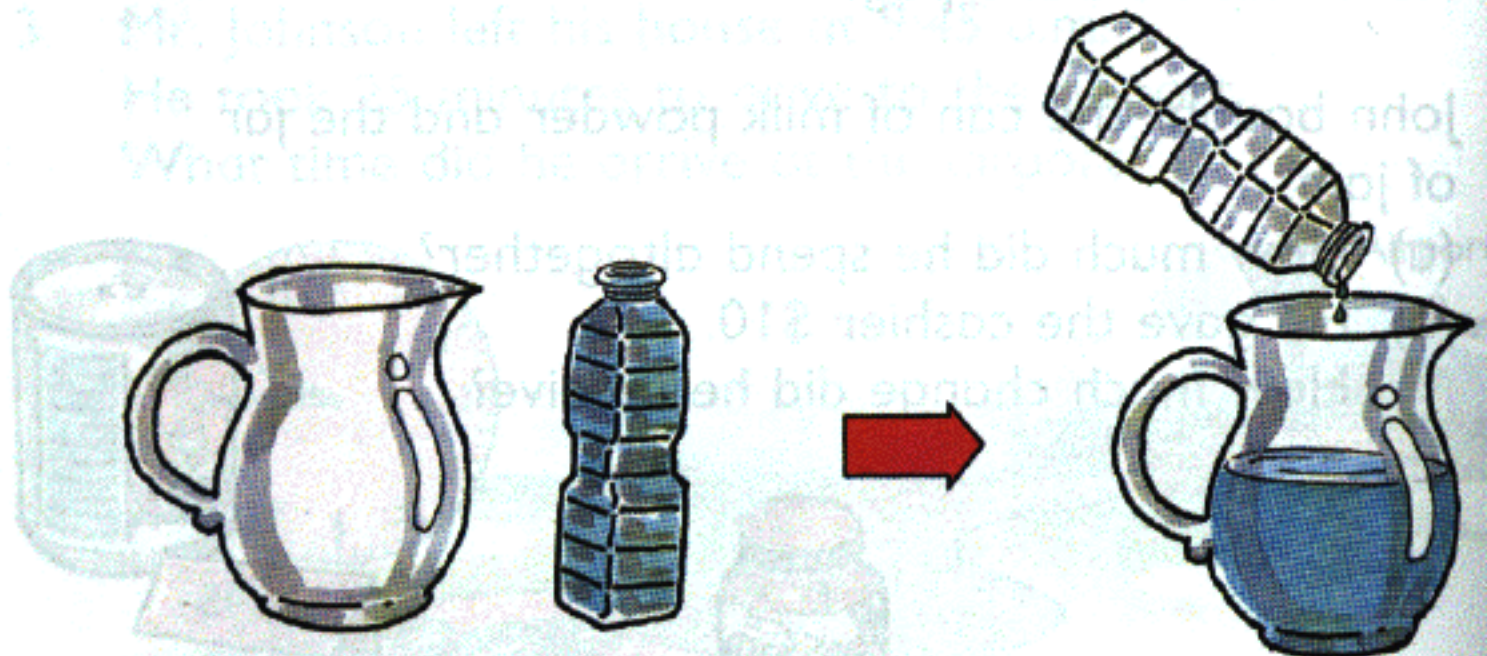


Capacity

1 Comparing Capacity



The jug holds more water than the bottle.



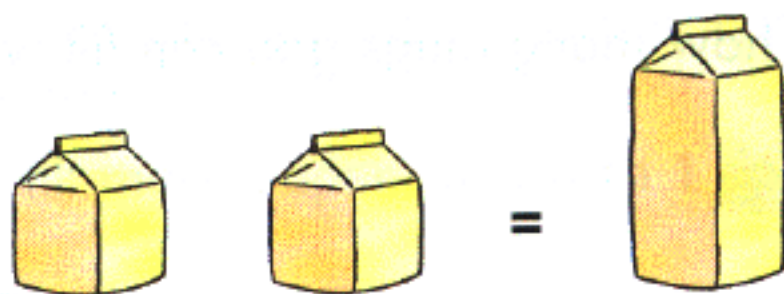
The bottle holds less water than the jug.

3 Gallons, Quarts, Pints and Cups

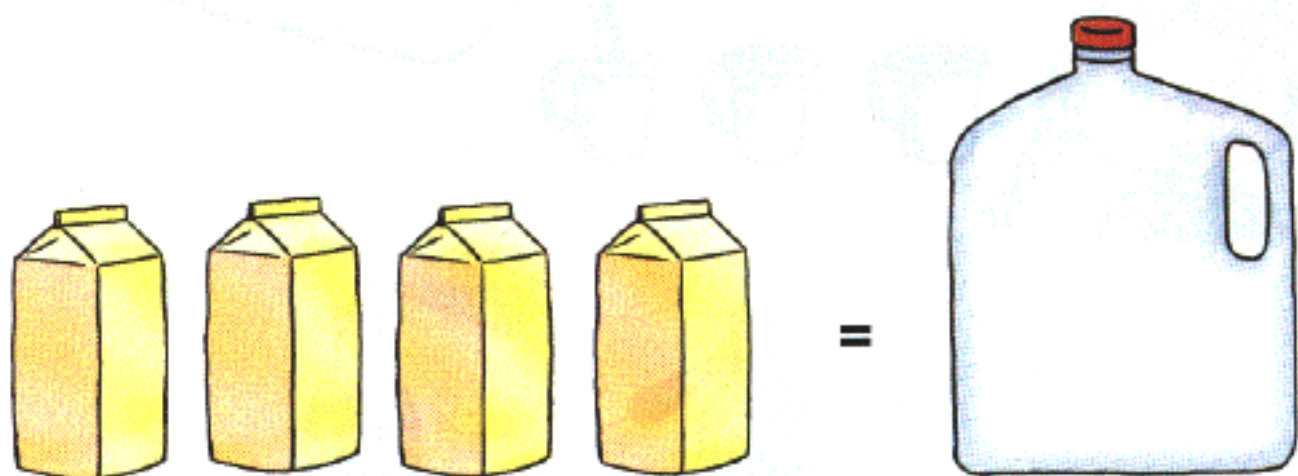
The capacity of a container can also be measured in cups, pints, quarts and gallons.



2 cups = 1 pint



2 pints = 1 quart



4 quarts = 1 gallon